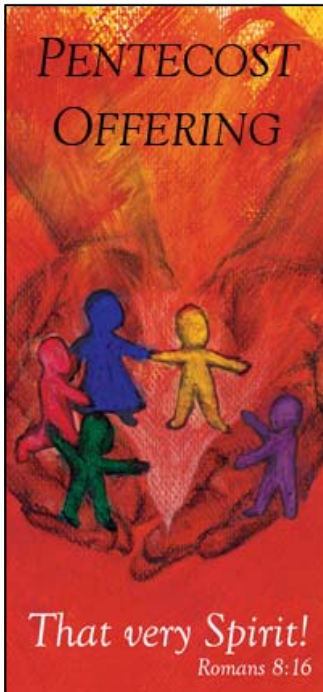


**MISSION STATEMENT** "As followers of Jesus Christ, we rejoice in God's plan for a just, loving, and peaceful world, and we commit ourselves to making it a reality for all people everywhere."



RUTGERS PRESBYTERIAN CHURCH

# Renewal

## From the Interim Pastor

**E**ach of the four Sundays in May has special significance for Rutgers Presbyterian Church. In the afternoon of May 6, there will be a program of music sponsored by our special events committee, chaired by Wellington Jones. The program will offer selections from the world of opera and from the repertoire of compositions for the piano. It will be a festive occasion during the liturgical season of Easter.

May 13 will be an opportunity for honoring mothers and mother-like women. The history of the Judeo-Christian tradition is rich with the contributions of nurturing women who have shaped our understanding of God and godliness. We will celebrate the sacrament of baptism as part of our morning worship service.

On May 20, we will observe a day of prayer and action for Colombia (read more inside).

The last Sunday of May, the 27th, is the Day of Pentecost for Christians. It is also part of Memorial Day weekend for most Americans. In the past, Rutgers Church has found creative ways to express the meaning of Pentecost, which is the centrality of the Holy Spirit in the life of the Apostolic Church. Who knows what form our celebration of that phenomenon will take in 2007? Stay tuned.

We continue our interim journey as a lively congregation committed to the inclusive hospitality exemplified by Jesus during his ministry in ancient Israel/Palestine. New people find their way to our sanctuary on a regular basis, and our members support the mission of our church. Attendance on Easter Sunday was higher than last year, an indication of spiritual health during an interim period.

An ad-hoc committee is planning a process by which all the members of our church family can have part in expressing hopes and dreams for the future of Rutgers Presbyterian Church. The committee will seek to engage a wide range of people in conversations, surveys, and group meetings as we do the work of discerning God's purposes for us in the coming years. All this (often called a "mission study") is in preparation for electing a pulpit nominating committee, probably in the fall, which will complete a church information form. That document, which requires approval by the session and presbytery's committee on ministry, will be circulated and read by potential candidates for the position of pastor at Rutgers Presbyterian Church.

I continue to be grateful for the privilege of being your interim pastor. May God's presence fill us with confidence and hope for the future.

Dave Prince

Dear friends,

Rutgers is hard at work on its **Mission Review**, a first step in the calling of a new pastor. Those of us on the Mission Review Steering Committee are planning a number of events to find out what is on the hearts and minds of our congregants as we move into the future. We want each of you to have an opportunity to take part, to share your views, to have a voice. This is all about you, about us, about our hopes and dreams for the future of our Christian community.

Therefore, we are asking people to **consider getting together in small groups to share a meal and some important conversation**. Please let us know that you are interested in participating by filling out the form inside this newsletter and either mailing it in or dropping it into the offering plate on Sunday. You can also email Rutgers with your name, phone number, and a quick note saying, "Yes! I am interested in sharing a meal and some good conversation." If you would like to volunteer your home for a small gathering, please let us know that as well.

We look forward to hearing from you.

Sincerely, Jacquelyn Carpenter, Christine Gorman, Anne Leader, Nora Lidell, Bob Shelton, Mark Young, and Joy Wyatt

# May 2007

| Sun  | Mon   | Tue   | Wed                       | Thu  | Fri                                  | Sat                                     |
|--|---|---|---------------------------|--|--------------------------------------|---|
| 6:00 p.m.<br>Men's Overnight Shelter                 | 12:15 p.m.<br>Alanon                                | 12:15 p.m.<br>Alanon  | 5:30 p.m.<br>A.A. Meeting | 6:00 p.m.<br>Meal Program                                    | 10:30 a.m.<br>Mothers' Bible Study   | 5:30 p.m.<br>A.A. Meeting               |
| 6<br>9:30 a.m.<br>Forum: Self-Help/Malawi            | 6:00 p.m.<br>Cub Scouts                             | 6:00 p.m.<br>Boy Scouts; Men's Support Group (HIV+/PLWA)                          | 23<br>Renewal Deadline    | 7:00 p.m.<br>Movie   | 6:00 p.m.<br>Men's Overnight Shelter | 6:00 p.m.<br>Men's Overnight Shelter    |
| 12:45 p.m.<br>Board of Deacons                       | 7<br>3:30 p.m.<br>Worship Committee                 | 8:00 p.m.<br>Men's Alanon   |                           | 7:30 p.m.<br>Women's Prayer Circle                           |                                      | 5<br>1:00 p.m.<br>Opera Dress Rehearsal |
| 2:30 p.m.<br>Opera Benefit                           | 21<br>6:30 p.m.<br>Christian Ed Committee           | 8<br>6:30 p.m.<br>Session Meeting   |                           | 17<br>6:30 p.m.<br>Mission Review Steering Committee         |                                      |   |
| 6-Jun 28<br>9:45 a.m.<br>Adult Class: Gospel of John | 28<br>Holiday<br>Church and office buildings closed | 15<br>Time T.B.A.<br>NYC Presbytery Meeting at Church of the Redeemer in Brooklyn |                           | 31<br>7:30 p.m.<br>Joint Bible Study with West End Synagogue |                                      | 18-19<br>FAMILY RETREAT                 |
| 20<br>12:45 p.m.<br>Peace & Social Justice Network   |   |   |                           |  |                                      |   |

| Sundays    |                           |
|------------|---------------------------|
| 9:45 am    | Sunday School for Adults  |
| 10 & 12:45 | Adult Choir Rehearsal     |
| 10:45      | Infant & Child Care       |
| 11:00      | Worship Service           |
| 11:15      | Sunday School (ages 3-12) |
| 12:15 pm   | Coffee Hour               |

## WHAT DO YOU THINK?

- To whom do you turn when the head of the family is the person causing friction?
- A friend is someone who does things for you and you never know.
- Peace of mind starts with you.
- Why should we have to worry about being attacked by unleashed dogs?
- How much weight can you lose eating two candy bars during a 30 minute power walk?
- To keep from having a panic attack, always put your wallet and house keys in the same place when you leave the house to go shopping.
- It's so offensive when liars think you are stupid or gullible enough to believe them.
- Do you still have that outfit in your closet with the price tag on it that now, years later, you haven't been able to lose the 5-10 lbs to make it fit just right?
- My brother said there are three sides to a coin when people are seeking counseling and each have a different version of their situation.
- Are you tempted to say something to an adult when they have their hat, scarf, and gloves on during the cold weather and the children with them don't?

| Birthdays! |  |
|------------|--|
| 1          | Luke Chang, Dina Phelps                |
| 10         | Juliet Pritner                         |
| 15         | Clif Fisher                            |
| 17         | Beverly Thompson                       |
| 19         | Bill Bailey                            |
| 21         | Nora Lidell                            |
| 26         | Eleanor Patrick                        |
| 27         | Emmet Smith                            |
| 30         | Elinor Bowles, David Hill, Ruth Munson |
| 31         | Tom Driver, Cynthia Gale               |

## Preaching Schedule

May 6 \_\_\_ 5th Sunday of Easter; The Rev. David Prince preaching  
 May 13 \_\_\_ Mothers' Day; Holy Communion; Sacrament of Baptism;  
 The Rev. Cheryl Pyrch preaching  
 May 20 \_\_\_ 7th Sunday of Easter; The Rev. Charles Amstein preaching  
 May 27 \_\_\_ Day of Pentecost; Holy Communion; The Rev. David Prince preaching

~Til next time, Jacquelyn M. Carpenter

## May 2007 at Rutgers Church, and Beyond

### Creating Space for Intention, Prayer, Witness, Gratitude Thursdays, April 26—June 21, 7:30 p.m. on the fourth floor

We are beginning a new sharing/prayer support group for women to practice deep listening, help each other hold intentions, deepen prayers and heal through the power of non-judgmental witnessing of one another's spiritual and emotional journeys. All women are welcome; please contact Joan Keener [joankeener33@hotmail.com](mailto:joankeener33@hotmail.com) or Frances Manners [manners3@verizon.net](mailto:manners3@verizon.net) to learn more and sign up.

### Fostering Self-Help in Malawi

Sunday, May 6 at 9:30 a.m. in the Session Room

Come learn what Presbyterians are doing in the southern African country of Malawi. Our guest speaker at this special forum is Dr. Martha Sommers, currently visiting from her home in Malawi. Martha is the only long-term doctor at the Embangweni Hospital, which serves a large rural area in Malawi where 25% of the population is HIV+, and one in four children don't live to see their 5th birthday. Yet there is hope: Martha says that Embangweni is known for its quality care and growing community health work. Discover what she has to say about how we in the U.S. can help people in places like Malawi help themselves.

### Continuing Study of the Gospel of John

Sundays, May 6—June 24, 9:45 a.m. in the Session Room  
(meets on the second floor on May 6th only)

Among Christians, John tends to be the most-loved or least-loved of the four gospels. Different in style, story-line, and theological concerns than the other three, the Gospel of John is especially challenging for liberal Christians. Its emphasis on the importance of right belief, its problematic description of "the Jews," and its long speeches discourage many. But the Gospel of John is a precious resource for all of us, and together we'll discover the wonderful stories and theological insights that the Church has valued over the centuries.

### A Musical Anthology

Sunday, May 6 at 2:30 p.m. in the Sanctuary

You are invited to a Rutgers' annual benefit concert for the Christopher Roberts Memorial Shelter. This year's program directed by R. Wellington Jones features excerpts from Strauss' *Die Fledermans*, Puccini's *La Bohème*, Bizet's *The Pearl Fishers*, Verdi's *Otello*, and more. Don't miss Charles Amstein in the role of Dr. Falke! Call to reserve your seat: 212-877-8227 or 212-582-2016. Tickets are \$20 each (tax-deductible donation) and will also be available at the door. Child care will be provided, along with a post-concert buffet.

### Rutgers Family Retreat: Where Does God Live?

Friday afternoon—Saturday evening, May 18 & 19

Ten families—including 20 children—are scheduled to go to Holmes, NY, for a family retreat led by the Reverend Susan Wonderland, Cheryl Pyrch, and Holly Nedelka. There is still

time to make a last-minute decision and sign up by May 10. Most of us will be going by train, leaving late Friday afternoon and returning by early evening on Saturday. For more information, contact Cheryl. Here is a description of the retreat:

**Where Does God Live? Practicing the Presence of God in Our Midst**—Some of the favorite and most feared questions from our children are about God. Where does God live? What does God look like? Can I see God? Part of the way we answer—and live out our answer—has to do with our own sense God's presence in the world around us. How and where do we recognize and give voice to God's presence—and teach our children to do the same? Why is that often so hard? How are we constrained in our own experiences by what we do and do not hear from others? We are a community that believes in the presence of God, the Spirit of God, the Holy, the Sacred, as integral to our existence. May we have eyes to see, and voices to speak that deep truth.

### Day of Prayer and Action for Colombia

Sunday, May 20, 2007

On Sunday, May 20, Rutgers will join with thousands of other churches of different communions across the US and Colombia in prayer for that country. During worship, we will lift up all who have suffered from the continuing violence, and pray for peace and a just and compassionate U.S. policy. Alejandra Trillot, a Union Seminary student from Colombia, will give the Moment for Mission, and there will be postcards to sign urging congress to pass a humane aid bill.

### The Book of Job

Thursday, May 31, 7:30 p.m. at West End Synagogue  
69th and Amsterdam Avenue

The book of Job has been important to Jews, Christians and many who do not consider it sacred scripture but are fascinated by the questions it raises: why do [good] people suffer? Is there a moral order to the universe? What kind of God do we worship? Join Cheryl Pyrch and Ayreh Gold of West End Synagogue, who will lead both congregations in a discussion of Job. After an overview of the story, we'll look at some of the Jewish, Christian, and humanist interpretations before delving into a few of the passages ourselves. This is a chance to build relationships with our neighbors at West End while we study this story that we share. It's recommended that you read through the book before coming, but it's not required. (If pressed for time, read chapters 1-7, 29-31 and 38-42.) RSVPs are appreciated, but feel free to just come!

### Looking Ahead

Rutgers Vacation Bible School, August 20-24, 2007

Pass the word on to family and friends! We will hold our Vacation Bible School this year on August 20-24, from 9 am to noon. Children will gather to hear Bible stories, do arts and crafts, play games and sing. We have begun planning, and more information will soon follow. We suggest a \$25 donation for the week (to help cover materials), scholarships available.



236 West 73rd Street  
New York, NY 10023

Phone: 212-877-8227  
Fax: 212-721-9154  
Web: [www.rutgerschurch.com](http://www.rutgerschurch.com)



**An Invitation from the  
Peace and Social Justice Network:**

We continue to explore ways we can open conversation in our community and work for peace and justice in the world. If you are interested in joining, or just learning more, please come to our next meeting on Sunday, May 20.

Or talk to any of the committee members:  
Anne Barstow, Tom Driver, Nora Lidell,  
Carl Lindskoog, or Suzanne Spears (chair).

On Friday, March 16, in the midst of a cold and icy winter storm, Bill Bailey, Carl Lindskoog and Cheryl Pynch joined thousands of other Christians in Washington, D.C., in a witness for peace at the National Cathedral and the White House. It began with worship that included eloquent testimony from people touched by the war in Iraq—including a mother who lost her son—and sermons by the Reverends Raphael Warnock and Jim Wallis. We then walked with three thousand others to Lafayette Park across from the White House, where Carl joined in a prayerful, deliberate, and peaceful act of civil disobedience: praying in front of the White House. Many (very cold) hours later, Carl was arrested and fined, and along with the 222 others who participated in this “divine obedience,” he brought the country’s attention to this Christian witness. The demonstration was widely and favorably covered, and kicked off a number of protests on the weekend of the fourth anniversary on the Iraq war.

Recognition and thanks also go to Anne Barstow and Tom Driver, who were prevented from going to Washington by the storm. It was their planning and organizing that made a Rutgers presence possible!